



# MONTHLY MEMBERSHIP PROGRESS REPORT

District 11 E2

Results as of: 10/31/2015

GMT: THOMAS MATNEY

LOCATION MICHIGAN

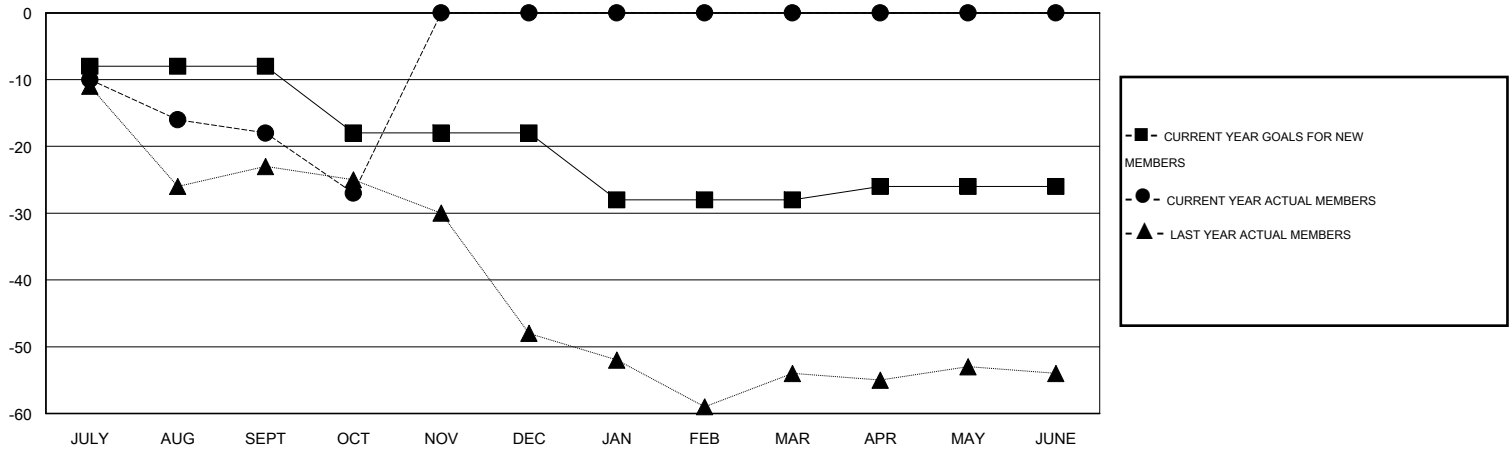
GMT CA 1

Clubs					Members				
RESULTS FOR 2015-2016					RESULTS FOR 2015-2016				
QUARTER	NEW CLUB GOAL	NEW CLUBS	DROPPED CLUBS	NET GAIN/LOSS	QUARTER	NEW MEMBER GOAL	CHARTER AND NEW MEMBERS ADDED	DROPPED MEMBERS	NET GAIN/LOSS
JULY/AUG/SEPT	0	0	1	-1	JULY/AUG/SEPT	-8	17	35	-18
OCT/NOV/DEC	0	0	0	0	OCT/NOV/DEC	-10	4	13	-9
JAN/FEB/MAR	0	0	0	0	JAN/FEB/MAR	-10	0	0	0
APR/MAY/JUNE	1	0	0	0	APR/MAY/JUNE	2	0	0	0

GOALS AND ACTUAL NEW CLUBS CUMULATIVE



GOALS AND ACTUAL MEMBERS CUMULATIVE



DROPPED CLUBS: 1	13 CLUBS OF 36 ADDED 1 OR MORE NEW MEMBERS	<b>GENDER DISTRIBUTION</b> MALE 804 (75.78%) FEMALE 257 (24.22%)
<b>DROPPED MEMBERS</b> DECEASED 5 CLUB CANCELLED 0 OTHER 43 TOTAL 48	<a href="#">CLICK HERE FOR HEALTH ASSESSMENT DATA</a>	FAMILY UNIT MEMBERS 149 HEAD OF HOUSEHOLD 74 NON-HEAD OF HOUSEHOLD 75